

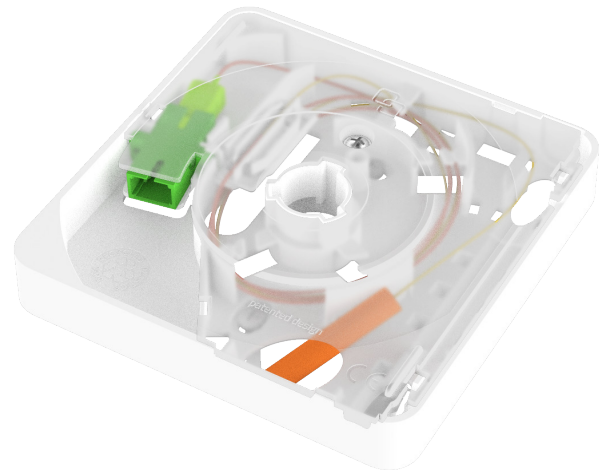


Genexis FiberTwist

FTU 2000-Series

(Fiber Termination Unit)

Base plate with fiber management



The FiberTwist FTU can be used as the foundation for all Genexis FiberTwist active units. This includes those from both the Point-to-Point and GPON, XGS-PON families, as well as optical data and RFoG.

The compact form factor of the FiberTwist FTU has been specifically designed for fast, efficient and easy installation in any location.

The FTU-2000 Series offers the benefit of being able to use a thicker and stiffer fiber tube. Via the top, bottom or one of the four different back fiber ingress points, it is possible to install the fiber tube. Thus, providing a small sized, easy to use and flexible solution for the distribution of fiber bandwidth throughout the home.

Key Features

- Compact Fiber Termination Unit (FTU) compatible with all FiberTwist active units
- Patented FiberTwist click-on interface enabling 100% trouble free, DIY active unit installation
- Suitable for patch cables and micro pipes of maximum 0.4 in
- Fiber ingress options: top, bottom, back 4x
- Fiber management with strain relief options per fiber ingress
- Option for small or large sized gas blocker
- Option for Quad-LC or Dual-SC connector with break-out plastic
- Splice holders for up to 6 pigtails
- Tamperproof sealable fiber management (warranty seal)
- Option for pre-installed pigtail(s)
- Option for Blind Cover to protect the fiber until the active unit (NT) is installed
- 70% post-consumer recycled plastics

Good things come in small parcels

The FiberTwist comes in a super compact design of only 11 x 11 cm. Its patented Twist interface enables easy installation of active equipment as well as its fiber patch module. Furthermore, the FTU's fiber management system cleverly integrates all technical features one would expect of a professional FTU.

The FTU is capable of holding six fibers. One connects to the active unit, and up to four others are available at any time. For example: as backup fiber or when using a Quad-LC or Dual-SC connector in a patch-out scenario. A choice of six ingress ports provides maximum installation flexibility.



Product features and specifications

Genesis FiberTwist FTU 2000-Series

Dimensions (H x W x D)

- FTU 4.33x4.33x0.75 in
- With Blind Cover 4.33x4.33x1.54 in
- With active unit 4.33x4.33x1.77 in

Weight

- FTU 3.1 oz
- Blind cover 1.69 oz

Mounting options

Wall junction box compatible

Safety regulations

- CE IEC 62368
- UL94HB flammability class
- RoHS 3 and REACH compliant

Fiber management

- Storage for 6 Fibers
- 6 fiber ingress points
- 1 patch port can accommodate:
 - Quad-LC or Dual-SC connector
- Sealable fiber management & strain relief
- Fiber types supported:
 - G.657.A1/.A2/.B2/.B3
- Max. gas-blocker size 0.98 x ø0.59 in

Pigtails*

- Attenuation Grade C, Return Loss Grade 1 (IEC 61753)
- Compliant with ITU-T G.657.A2
- 0.04 in loose tube
- 47.24 in long, red color

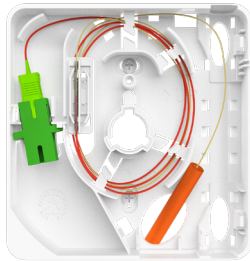
Accessories (supplied)

- Mounting screws and plugs
- Cable ties
- Foam padding
- Splice holders for:
 - 6 ANT splices
 - 2 single fusion width splice sleeve
- Warranty seal
- SC/APC Twist connector with 12 mm boot
- Installation guide (digital available)
- Drilling template (digital available)

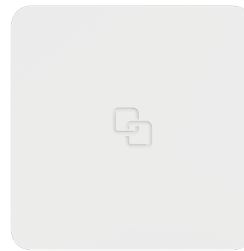
Accessories (optional)

- Blind Cover (picture below):
 - Finishes the FTU and protects the fiber until installation of the NT (active unit)

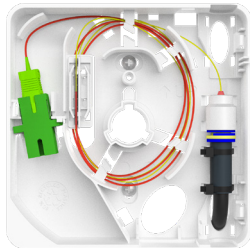
* Applicable to selected models only, see table



FiberTwist FTU-2000



FiberTwist FTU-BlindCover



Use case: with gas blocker



Customized FTU-BlindCover

Genesis FiberTwist FTU-2000 Series product models

Models	Models with pre-installed pigtail(s)	Other options on request
FiberTwist FTU-2000	FiberTwist FTU-2100	E.g., patch options
FiberTwist FTU-BlindCover	Provides dust protection for the fiber. Fits all FTU models	